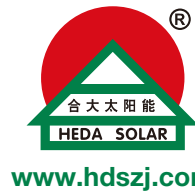


Monocrystalline Solar Module

HDS50M/HDS80M/HDS100M



HD Solar introduces all new line of high performance modules in wide application.

Warranty

Industry leading power output warranty (12 years/90%, 25 years/80%)
10-year warranty on product materials and processing technology.

Applications

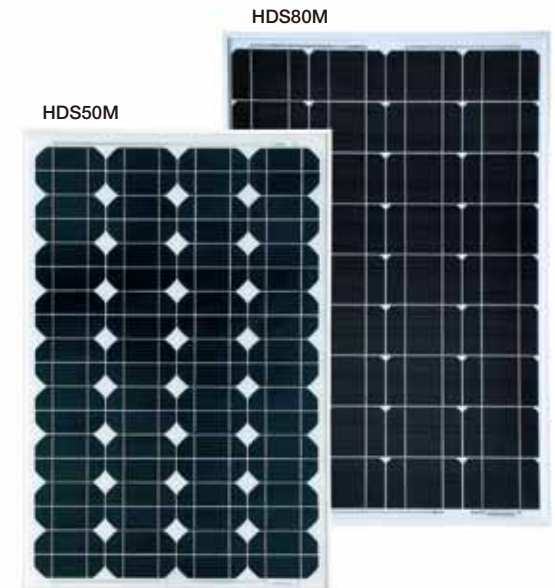
- On-grid residential roof-tops
- On-grid commercial/industrial roof-tops
- Solar power plants
- Other on-grid applications
- off-grid system

Electrical Characteristics

All specified Parameters at STC 25°C Ambient, 1000W/m² irradiance and AM 1.5

Type		HDS50M	HDS80M	HDS100M
Max-Power Pm	(W)	50	80	100
Power Tolerance	(W)	±3	±3	±3
Max-Power Voltage	Vm(V)	17.5	17.5	19
Max-Power Current	Im(A)	2.86	4.58	5.26
Short-Circuit Current	Isc(A)	3.08	4.93	5.68
Open-Circuit Voltage	Voc(V)	21.5	21.5	22.8
Max-System Voltage	(VDC)	600V(UL)/1000V(IEC)		
Cell Efficiency	(%)	14	15	15
Module Efficiency	(%)	11	12.4	12.4
Max.Series Fuse	(A)	15		
Pm Temperature Coefficients	(%/°C)	-0.48		
Isc Temperature Coefficients	(%/°C)	0.055		
Voc Temperature Coefficients	(%/°C)	-0.347		
NOCT Nominal Operating Cell Temperature		47±2°C		

Maximum load rating: 5400pa(112.78lbf/ft²)

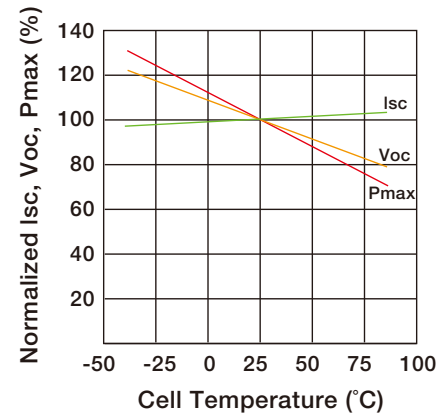
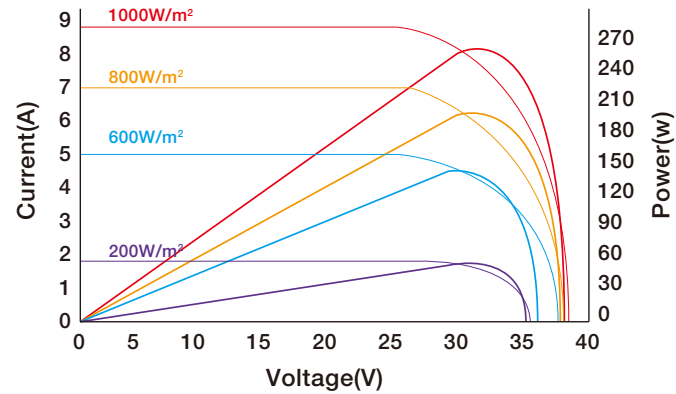


Address: No.8 Longxi South Rd., Shouxiang, Fuyang, Zhejiang, China

Mechanical Characteristics

Cable type, Diameter and Length	4mm ² , TUV certified		
Type of Connector	Compatible Type IV		
Number, type and arrangement of cells	36pcs, Mono-Crystalline Silicon(4x9)		
Cell Size (mm)	125x84	125x125	125x125
Dimension (mm)	836x550x35	1200x550x35	1200x550x35
Weight (Kg)	6.5	10	10
NO.of Draining Holes in Frame	10		
Color of frame	Silver		
Glass, Type and Thickness	High Transmission, Low Iron, Tempered Glass 3.2mm		

I-V Curve



I-V Curves at different Irradiances (AM1.5 25°C)

Specifications included in this datasheet are subject to change without prior notice

Packaging Configuration

Loading Capacity	1920pcs/40HQ	1344pcs/40HQ
------------------	--------------	--------------

Absolute Ratings

Dielectric Insulation Voltage	3000V
Operating Temperature (°C)	-40~+85
Storage Temperature (°C)	-40~+85